

VISUAL STORY

Visiting The Story Museum

Welcome to The Story Museum

We hope you enjoy your visit.

Please book your tickets in advance via the website or call the Box Office.

Feel free to take photos in the Museum and share your experience.

Instagram: @thestorymuseum
Twitter: @TheStoryMuseum
Facebook: /TheStoryMuseum
TikTok: @thestorymuseum
YouTube: /storymuseum

For more information about What's On, visit:

storymuseum.org.uk

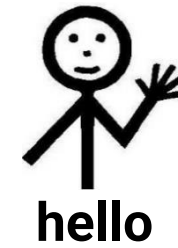
Contact us:

Enquiries: 01865 790050
hello@storymuseum.org.uk

Box Office: 01865 807600
boxoffice@storymuseum.org.uk

This is a map of The Story Museum.





**This is the entrance to
The Story Museum.**

There are large, blue
gates that lead into a
courtyard.



The entrance to the courtyard is an archway.

Staff members may meet you here and say hello!

They will check your tickets and give you a colourful wristband. The wristband is called a **Sticket**.

The yellow door leads to the shop.



This is the Story Museum shop.

Ground Floor

You can buy
books and toys
here. You can
also buy tickets.

Sometimes staff
will check your
tickets inside the
shop instead of
the archway.



If you need help during your visit, you can ask a staff member. Staff members can be found in a bright orange apron, or they will be wearing a lanyard with the Story Museum logo and name on it.

They are very friendly and will help you if you ask.

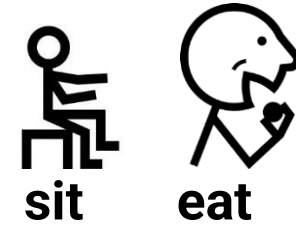
Our staff members are called **Story Guides**.



This is the courtyard.

There is a bright mural of a skyscape on the outside of the building.

There are tables and chairs for the café.



This is the Café.

Ground Floor

If you want to eat or drink something, you can buy food and drink in the café. There are tables inside and outside.

It might be busy and noisy.



**These are the
toilets.**

Ground Floor

They are in the
cloakroom. The
cloakroom has
lockers to store your
bags and
pushchairs.

There are also
toilets on the first
floor.



Stairs and lift

These stairs lead up to the **Portal** and the **Woodshed**.

There is a lift too!
Can you see the grey lift doors?



Inside The Story Museum

The Museum has many rooms. Some are big. Some are small. Some are light. Some are dark. Some are noisy. Some are quiet.

You do not have to go into all the rooms if you do not want to.

There are things to see and do in each room.



This is Small Worlds.

Ground Floor

Small Worlds is a play space for 0-5 year olds.

There are different story areas to explore. Some areas are dark and some have bright lights. There are lots of things to play with.

Can you see the red **Story Bus**?

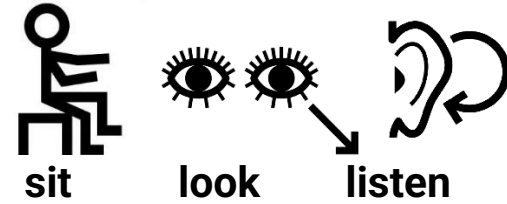
Inside Small Worlds



This is the **Story Bed**. It's much bigger than your bed at home! Sometimes a **Story Guide** will lead story time on the bed.



This is the **Night Safe**. It is a small, dark, quiet room. It has star lights on the ceiling and beanbags to sit on.



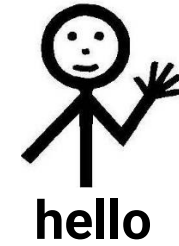
This is City of Stories.

Ground Floor

It is a film about stories in Oxford. It is 27 minutes long.

During the film, it will be dark. Sometimes it will be noisy.

You will sit on a bench which will vibrate during the film.



This is the Portal.

First Floor

A Story Guide will welcome you here and show you the way to the Galleries. They will check your Sticket and give you a Portal Pass.



These are Portal Passes.

Each Portal Pass shows a different story character. There are lots of characters to choose from. You can choose a character if you like.

You can use the Portal Pass to look for story-related items around the Museum if you like.



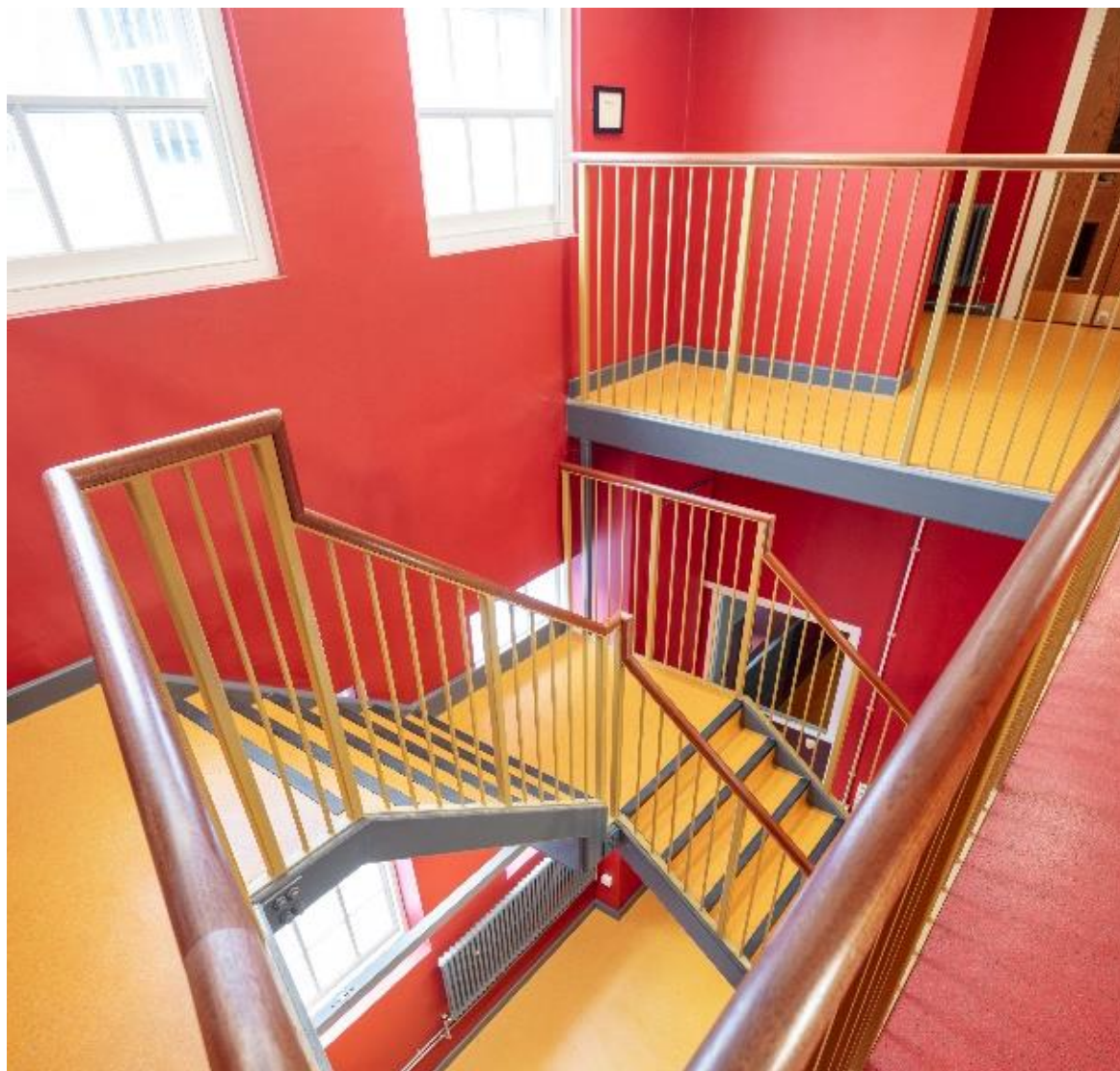
listen

This is the Whispering Wood.

First Floor

It is a big, dark room with eight big trees. Each tree has an activity that relates to a story. You can use the cups attached to the trees to listen to the story. The trees light up to show what's inside





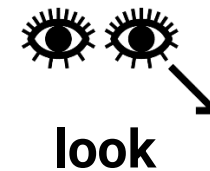
These are the stairs

First Floor

When you leave the **Whispering Wood**, you can go up the stairs to the second floor.

At the top is the **Treasure Chamber** and the **Enchanted Library**.

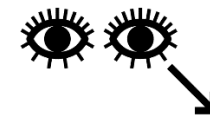
If you can't use the stairs, a **Story Guide** will help you use the lift.



**This is the
Treasure Chamber.**
Second Floor

It is an exhibition
space.

There are different
displays and
objects to look at.
The exhibitions
change from time
to time.



Look



This is the Enchanted Library.

Second Floor

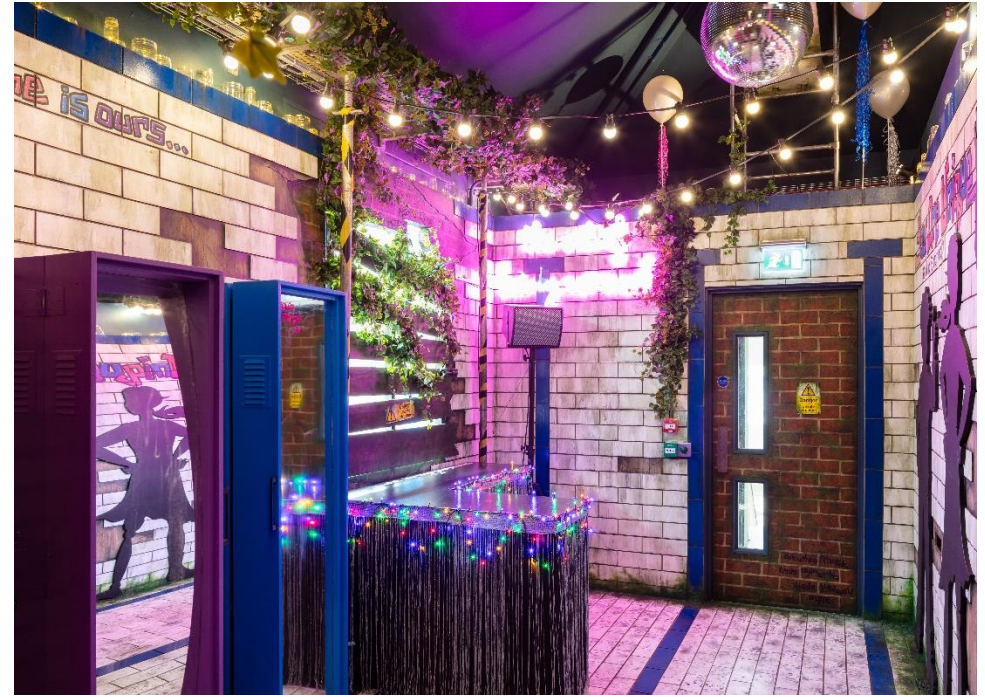
It is a big, dark room. There are lots of books and objects to look at on the bookshelves.

There are eight small rooms inside the **Enchanted Library**, showing different stories. Some of the rooms are dark. Some are light. Some have sound in them.

Inside the Enchanted Library



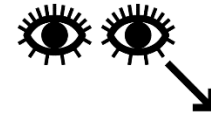
This is the room for *The Lion, the Witch and the Wardrobe*. There are mirrors on all of the walls. There is fake snow on the floor.



This is the room for *The Art of Being Normal*. There is a mirror ball that reflects lights on the walls. There is music playing.



sit



look



listen



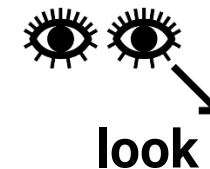
This is the Woodshed.

First floor

It is a theatre space where you can watch performances.

A guide will help you to your seat.

Sometimes it will be dark or noisy. You can leave a performance if you need to and come back in again when you're ready.

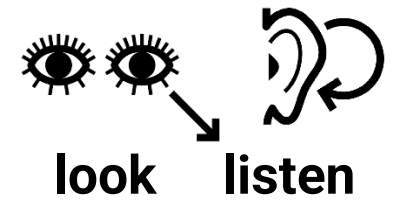


This is Ginny's Bar.

First floor

When you come to a performance at the **Woodshed**, you can have a drink here.

There are movie posters on the wall. Can you see any you know?



This is the Magic Common Room.

First floor

It is inspired by Hogwarts.

Sometimes there will be clubs or storytelling here.



These signs are above Fire Exit doors.

If you hear a loud siren in the Museum, this means it's time for everyone to leave the Museum. We do this quickly and calmly.

The **Fire Exit** signs show us where to go. Story Guides will help you.



**Thank you for reading about
The Story Museum.**

We hope to see you soon!